

2nd Gen Gym Space

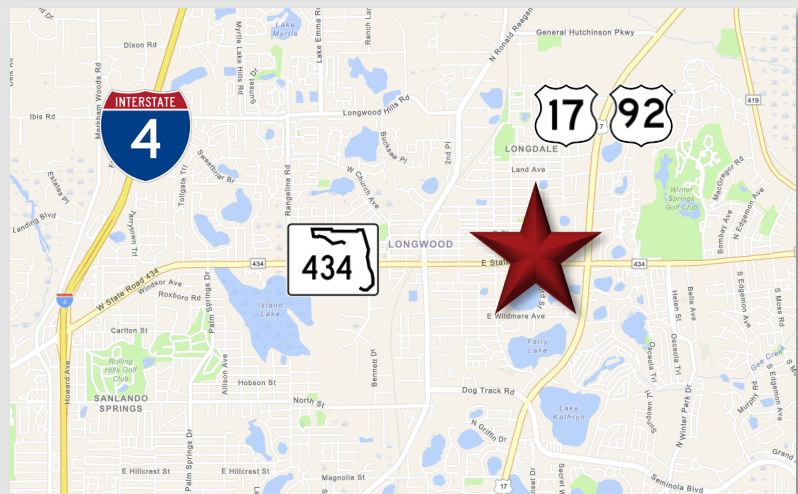
851 E SR 434, STE 208, Longwood, FL 32750



Lease Rate: \$17 NNN

LOCATION DETAILS

Located on East State Road 434 with a traffic count of over 26,000 CPD. Adjacent to Truist Bank and First Baptist Church of Longwood, and directly across from AutoZone Auto Parts. The center is conveniently situated, being less than 4 miles from I-4 and in close proximity to major thoroughfares such as US 17-92 and Ronald Reagan Blvd, offering easy access from all over Central Florida.



LISTING HIGHLIGHTS

- **±4,500 SF** 2nd Generation Gym **Available Now**
- Located in a ±61,200 SF retail plaza with national brands and local businesses like O'Reilly Auto Parts, and Hero Academy Martial Arts.
- **Mostly open layout** includes:
 - Men's and women's restrooms with individual stalls and showers
 - Managerial office
 - Bonus room and storage room
- Monument and storefront signage available
- **246 Shared parking spaces**

2024 DEMOGRAPHICS

	1-MILE	3-MILE	5-MILE
Population	10,674	73,085	206,908
Average HH Income	\$77,699	\$102,651	\$111,256
Median HH Income	\$63,444	\$77,036	\$78,728

CONTACT FOR MORE INFORMATION

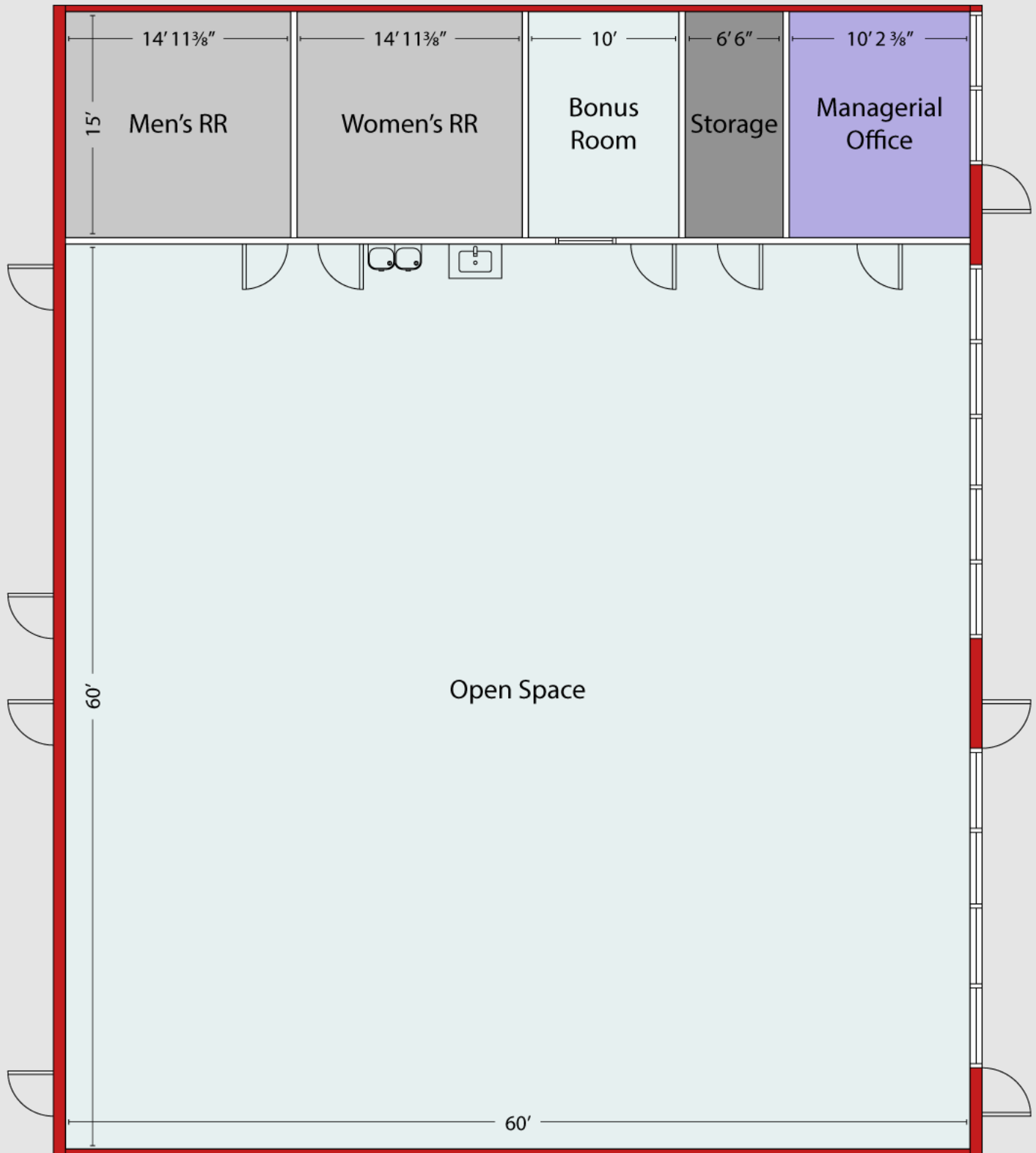
Marie Shorey, CCIM

(407) 383-8142

marie@palkiper.com

2nd Gen Gym Space

851 E SR 434, STE 208, Longwood, FL 32750



CONTACT FOR MORE INFORMATION

Marie Shorey, CCIM

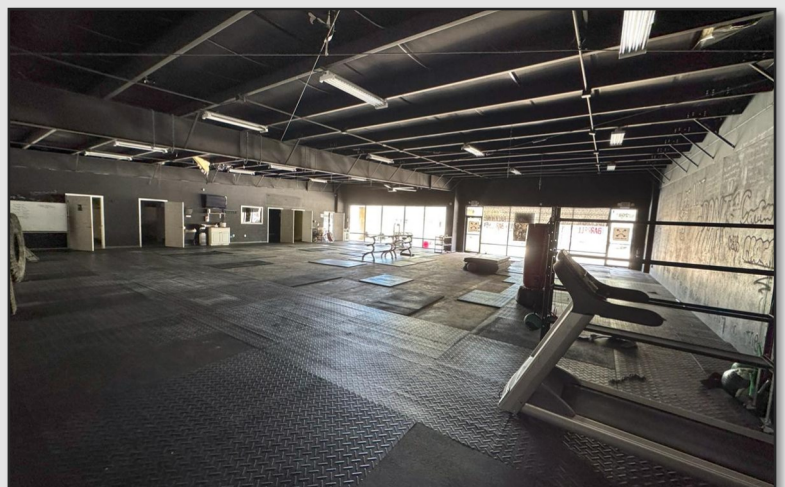
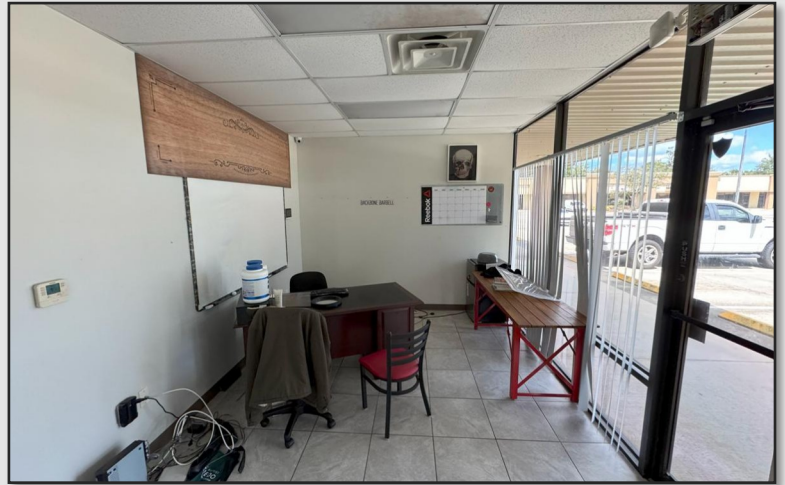
(407) 383-8142

marie@palkiper.com

2nd Gen Gym Space

851 E SR 434, STE 208, Longwood, FL 32750

SUITE 208



CONTACT FOR MORE INFORMATION

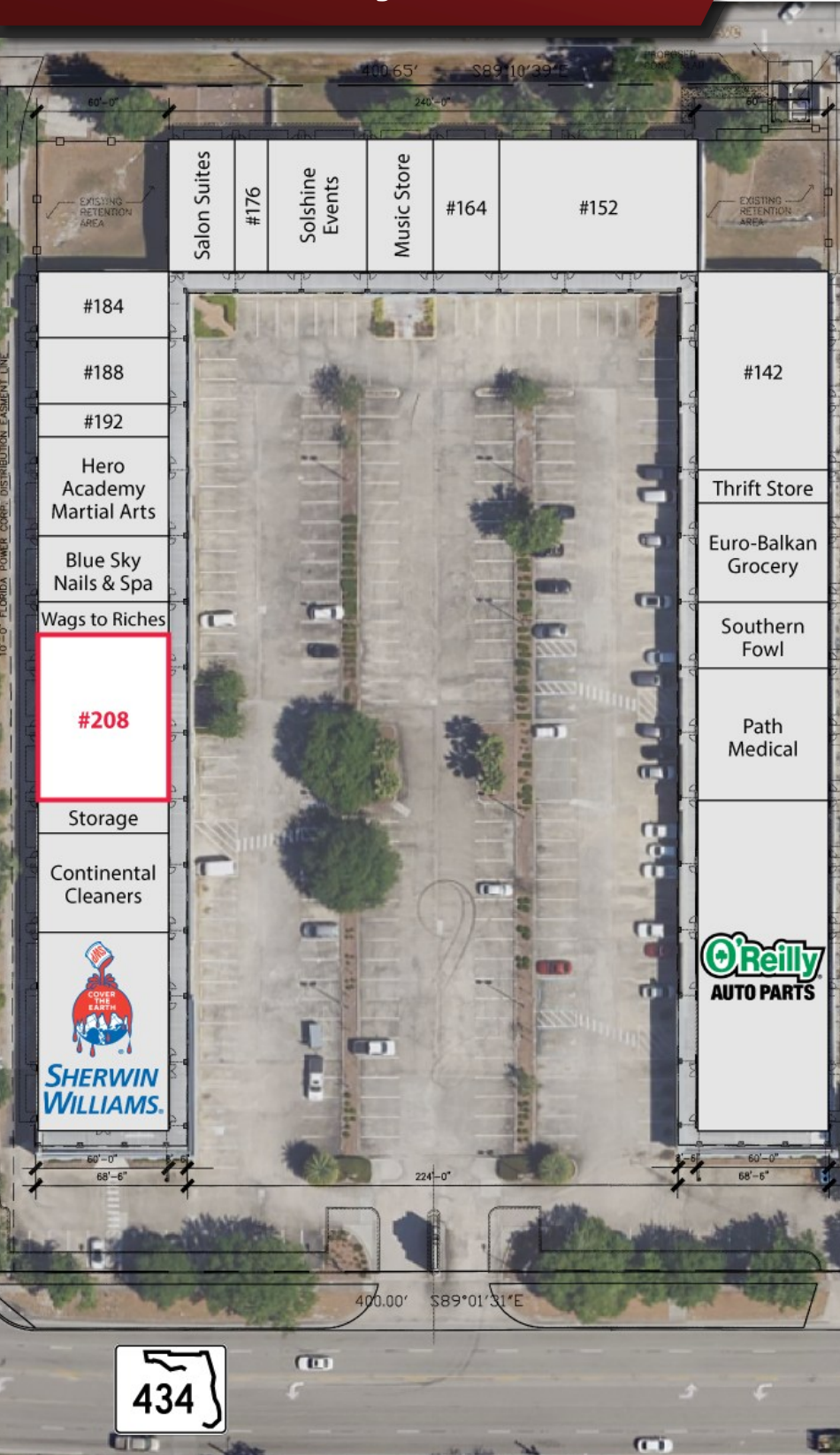
Marie Shorey, CCIM

(407) 383-8142

marie@palkiper.com

2nd Gen Gym Space

851 E SR 434, STE 208, Longwood, FL 32750



STE #	TENANT	SQ.FT.
100	O'Reilly Auto Parts	9,000
126	Path Medical	3,600
128	Southern Fowl Restaurant	1,800
132	Euro - Balkan Grocery	2,700
138	Thrift Store	900
142	TBD	5,400
152-164	TBD	7,200
168	Music Store	1,800
176	Solshine Events	2,700
178	TBD	900
180	The E Salon and Suites	1,800
184-192	TBD	4,500
194	Hero Academy Martial Arts	2,700
200	Blue Sky Nails & Spa	1,800
204	Wags to Riches	900
208	Available - 2nd Gen Gym	4,500
216	Storage	900
218	Continental Cleaners	2,700
226	Sherwin-Williams	5,400

CONTACT FOR MORE INFORMATION

Marie Shorey, CCIM

(407) 383-8142

marie@palkiper.com